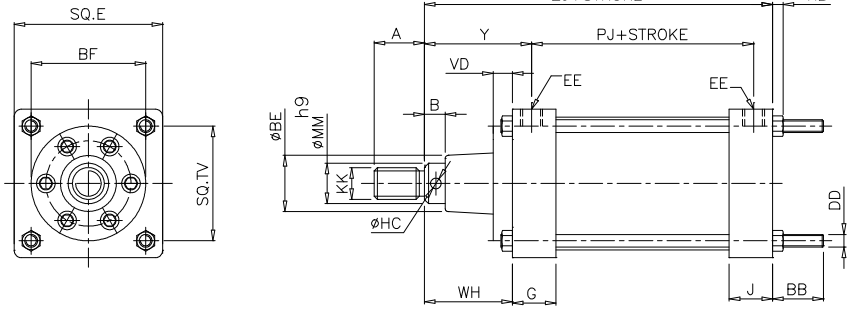


Heavy Duty Cylinders

Double acting ZM/1000 Ø 4” – 12”



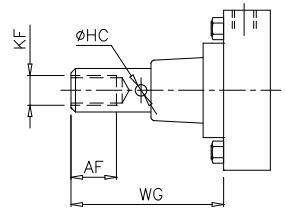
Basic Dimensions

Ø (Inch)	A	B	BB	BE	BF	DD	Sq.E	EE	G	ØHC	J
4	47.5	19	29	64	89	M10	114	G1/2	46	10	46
5	57	22	39	73	108	M12	140	G1/2	47.5	10	47.5
6	76	32	48	89	127	M16	167	G3/4	43	10	43
8	76	32	57	86	168	M18	219	G1	60	10	60
10	95	32	68	111	210	M24	270	G1	70	16	70
12	95	32	68	111	210	M24	321	G1	70	16	70

Ø (Inch)	KB	KK	ØMM H ⁹	PJ	•TV	VD	WH	Y	ZJ
4	8.5	M30	1.5”	98	89	11	76	103	228
5	12	M36	1.75”	114	108	13	76	103	244
6	15	M48	2.25”	114	128.6	16	100	124	262
8	19	M48	2.25”	141	168.3	19	116	150.5	326
10	24	M64	3”	197	209.6	22	130	174.5	416
12	24	M64	3”	197	246	22	130	174.5	416

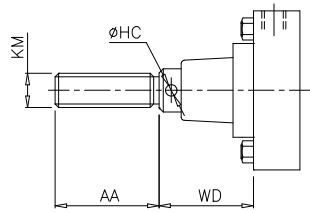
Cylinder Variants

ZM/1000/X - female piston rod thread



Ø (Inch)	AF	Ø HC	KF	WG
4	47.5	10	M30	127
5	57	10	M30	133
6	76	10	M42	176
8	76	10	M42	195
10	95	16	M64x4	228
12	95	12	M64x4	228

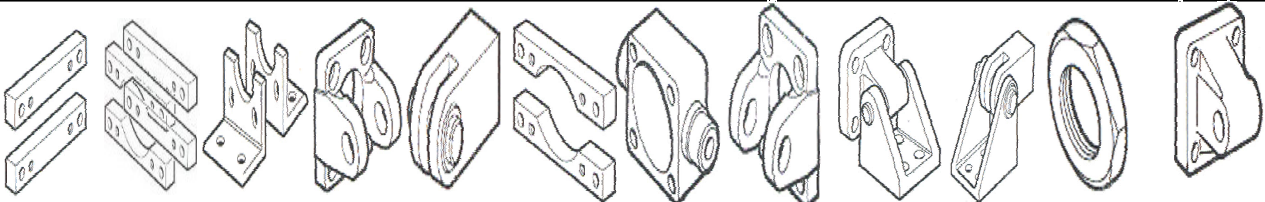
ZM/1000/Y - Full piston rod thread (Male)



Ø (Inch)	AA	Ø HC	KM	WD
4	88	10	M36	80
5	103	10	M42	78
6	134	10	M56x4	102
8	134	10	M56x4	118
10	180	16	M76x4	134
12	180	16	M76x4	134

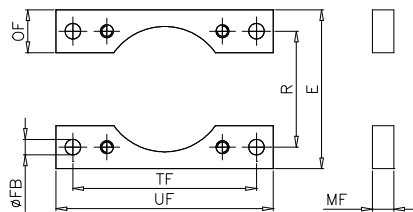
Heavy Duty Cylinder Mountings

Ø (Inch)	B	BG	C	D	F	G	H	K	L	M	N	R
-------------	---	----	---	---	---	---	---	---	---	---	---	---



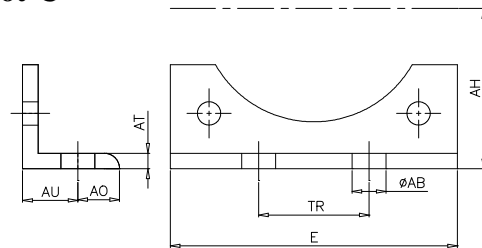
4	ZQM/887	ZQM/1187	ZQM/746	ZQM/758/2	ZQM/409	ZQM/987	ZM/P8638	ZQM/758/1	ZQM/912	ZQM/903	ZM/P9693/4	ZQM/763
5	ZQM/886	ZQM/1188	ZQM/981	ZQM/759/2	ZQM/410	ZQM/988	ZM/P8639	ZQM/759/1	ZQM/913	ZQM/904		ZQM/764
6	ZQM/884/2	ZQM/1189	ZQM/826	ZQM/761/2	ZQM/411	ZQM/884/1	ZM/P8640	ZQM/761/1	ZQM/914	ZQM/906		ZQM/765
8	ZQM/883/2	-	ZQM/745	ZQM/762/2	ZQM/411	ZQM/883/1	ZM/P8645	ZQM/762/1	ZQM/915	ZQM/906		ZQM/766
10	ZQM/882/2	-	ZQM/744	-	ZQM/412	ZQM/882/1	ZM/P8667	-	ZQM/917	ZQM/921		ZQM/767
12	ZQM/889/2	-	ZQM/743	-	ZQM/412	ZQM/889/1	ZM/P8670	-	ZQM/918	ZQM/921		ZQM/768

For ZM/1000, Rear Flange-B, Front Flange-G Front and Rear Flange-BG



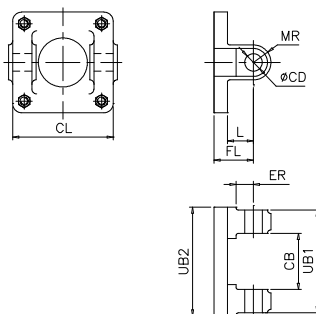
Ø (In)	E	Ø FB	MF	OF	R	TF	UF	Kg
4	114	13.5	16	32	89	146	178	1.00
5	140	13.5	20	40	108	171.5	203	1.50
6	167	16.7	20	40	128.5	205	243	2.40
8	219	20	25	50	168.3	263.5	314	5.50
10	270	26	30	65	209.6	333.5	397	12.0
12	321	26	30	65	246	384.2	448	14.0

Foot-C

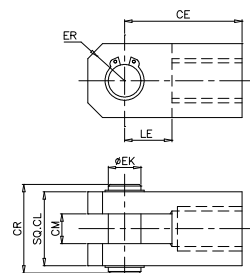


Ø (In)	ØAB	AH	AO	AT	AU	E	TR	Kg
4	14	70	24.5	8	25.5	114	51	0.50
5	17	82.5	21.5	8	28.5	140	57.2	1.00
6	17	99.5	25	10	35	167	70	2.50
8	17	122	22	10	38	219	82.5	3.80
10	26	159	46	15	54	270	114.3	9.50
12	26	177	46	15	54	320	139.5	11.5

Rear Clevis-D



Piston Rod Clevis-F



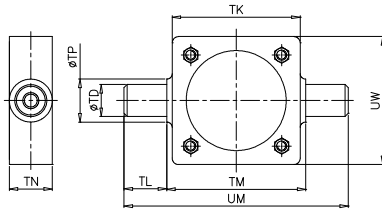
Rear Clevis-D

∅ (In)	CB	CD ^{G7}	CL	ER	FL	L	MR	UB1	UB2	Kg
4	70	22	114	-	57	36.5	19	-	117.5	1.25
5	92	25	140	32	70	43	24	-	143	2.50
6	106.5	32	167	35	76	49	28.5	-	170	3.50
8	122.2	38	217.5	38	85.7	54	38	224	237	7.00

Piston Rod Clevis-F

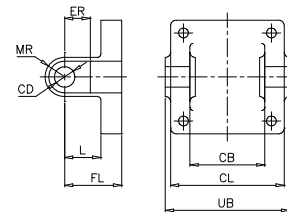
∅ (In)	CE	• CL	CM	CR	EK ^{G10}	ER	LE	Kg
4	79.5	51	20	60	22	25	32	1.25
5	95.2	63.5	25	74	25	32	38	0.70
6	120.5	76	32	87	32	38	44.5	2.75
8	120.5	76	32	87	32	38	44.5	2.75
10	146	89	38	99	38	45	51	7.00
12	146	89	38	99	38	45	51	7.00

Central Trunnion - H



Front Clevis - K

ER=*We are offering chamfer in place of radius

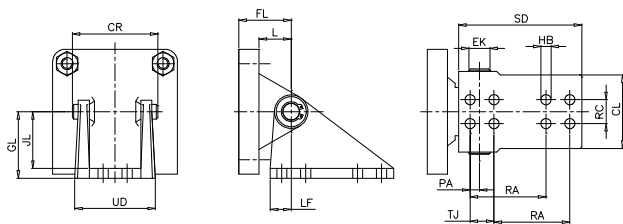


∅ (In)	TD ^{G10}	TK	TL	TM	TN	∅TP	UM	UW	Kg
4	32	127	41.5	139.5	44.5	44.5	222.5	127	2.50
5	38	152	51	165	51	51	266.5	152	3.50
6	38	187	51	192	51	51	293.5	187	5.00
8	45	235	54	247	63.5	64	355.5	245	10.0
10	65	318	76.2	330	76	114	482.5	318	25.0
12	75	368	76.2	381	89	127	533.5	368	35.0

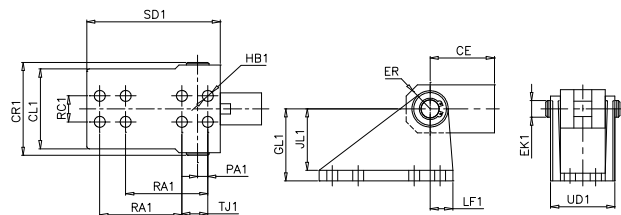
∅ (In)	CB	CD ^{G7}	CL	ER	FL	L	MR	UB1	UB2	Kg
4	70	22	114	-	57	36.5	19	-	117.5	1.25
5	92	25	140	32	70	43	24	-	143	2.50
6	106.5	32	167	35	76	49	28.5	-	170	3.50
8	122.2	38	217.5	38	85.7	54	38	224	237	7.00

Note: These mountings are only supplied assembled complete with the cylinder unless otherwise specified

Rear Hinge - L



Front Hinge - M

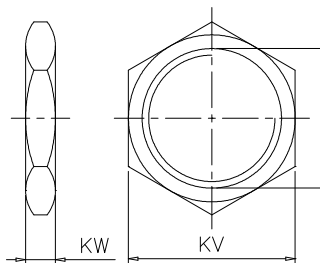


∅ (In)	CE	CL	CL1	CR	CR1	EK	EK1	ER	FL	GL	GL1	∅H B	∅HB1	JL	JL1	L
4	79.5	70	79.5	82.5	92	18	22	25	51	74.5	89	12	10.3	40	79.5	30.5
5	95.5	70	98.5	82.5	114.5	18	25	32	57	74.5	89	12	13.5	65	76.2	33
6	120.5	98.5	114.5	114.5	132	25	32	38	70	89	116	13.5	13.5	76	103.2	43
8	120.5	100	114.5	114.5	132	25	32	38	79.5	116	116	16.7	13.5	100	103.2	47.5
10	146	151	146	178	165	38	38	45	95.2	171.5	116	27	23	151	100	57.2
12	146	151	146	178	165	38	38	45	95.2	171.5	116	27	23	151	100	57.2

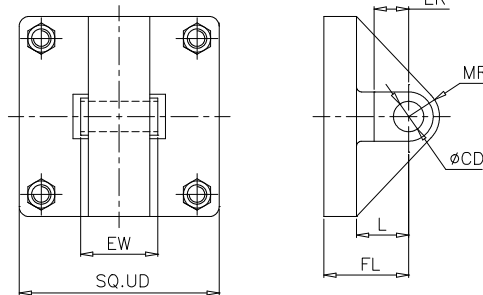
Heavy Duty Cylinders Mountings For ZM/1000 (Rear hinge – L & Front hinge - M)

Ø (In)	LF	LF1	PA	PA1	RA	RA1	RC	RC1	SD	SD1	TJ	TJ1	UD	UD1	Kg-L	Kg-M
4	24	28.5	11	16	76	89	22	22	101.5	114.5	-	-	82.5	79.5	3.50	2.00
5	24	28.5	11	12.5	76	102	22	32	101.5	165	-	32	82.5	108	5.00	3.00
6	28.5	35	12.5	16	101.5	121	32	38	165	159	32	-	108	114.5	11.0	3.00
8	31.5	35	16	16	114.5	121	32	38	184.2	159	38	-	117.5	114.5	17.5	6.00
10	44.5	45	16	19	133.5	114.5	51	41	247.7	210	57	44.5	159	146	25.0	11.5
12	44.5	45	16	19	133.5	114.5	51	41	247.7	210	57	44.5	159	146	30.0	11.5

Nose-N



Rear Eye-R



Ø (In)	KV(A/F)	KW	BE	Kg
4	80	16	M64x2	0.18

Ø (In)	CD ^{H7}	ER	EW	FL	L	MR	UD	Kg
4	18	25.5	44.5	51	30.5	21	114	2.60
5	18	28.5	44.5	57	33	21	140	3.60
6	25	28.5	63.5	70	43	25.5	167	6.20
8	25	32	63.5	79.5	47.5	25.5	218	11.5
10	38	44.5	101.5	95.2	57.2	41	269	12.6
12	38	44.5	101.5	95.5	57.2	41	320	17.5