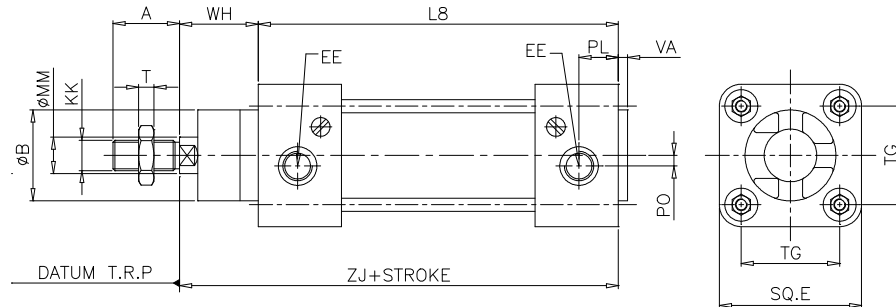


ISO/VDMA CYLINDERS ZPRM/8000,ZPRM/8000/M

Ordering Examples :

- 1.ZPRM/8040/125 indicates 40mm bore cylinder having a stroke length of 125mm.
 - 2.ZPRM/8040/M/125 indicates 40mm bore cylinder with Magnetic piston having a stroke length of 125mm.
 - 3.ZPRM/8032/*25/D indicates 32mm bore cylinder having a stroke length of 25mm and fitted with a Rear Clevis mounting style 'D'.
- * Add M if you require Magnetic Piston, otherwise omit.

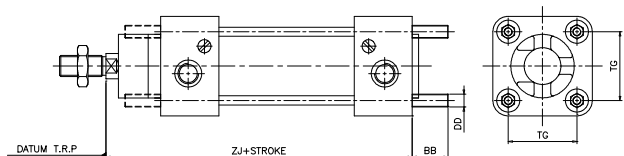
Basic Cylinder :



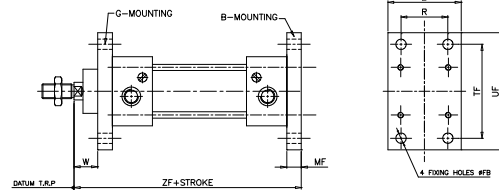
Model	Bore	A	B	E	EE	KK	MM	VA	PL	PO	WH	L8	TG	ZJ	T
ZPRM/8032	32	22	30	47	G1/8	M10x1.25	12	3	10	3.5	26	94	32.5	120	5
ZPRM/8040	40	24	35	53	G1/4	M12x1.25	16	4	12	5.5	30	105	38.0	135	6
ZPRM/8050	50	32	40	65	G1/4	M16x1.5	20	4	14	8	37	106	46.5	143	8
ZPRM/8063	63	32	45	75	G3/8	M16x1.5	20	4	16.5	11.5	37	121	56.5	158	8
ZPRM/8080	80	40	45	95	G3/8	M20x1.5	25	4	18	11.5	46	128	72.0	174	10
ZPRM/8100	100	40	55	117	G1/2	M20x1.5	25	4	17.5	9	51	138	89.0	189	10

Front and Rear Stud Mounting Style "A"(MX 1)

Model	DD	BB	TG	ZJ	Mounting A
ZPRM/8032	M6	17	32.5	120	ZQM/8032/35
ZPRM/8040	M6	17	38.0	135	ZQM/8032/35
ZPRM/8050	M8	23	46.0	143	ZQM/8050/35
ZPRM/8063	M8	23	56.5	158	ZQM/8050/35
ZPRM/8080	M10	28	72.0	174	ZQM/8080/35
ZPRM/8100	M10	28	89.0	189	ZQM/8080/35



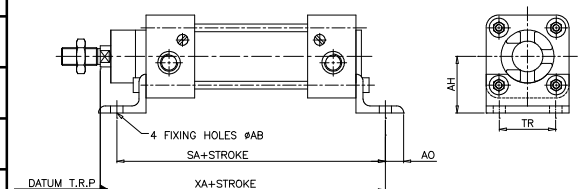
Rear Flange Mounting Style “B”(MF2) Front Flange Mounting Style “G”(MF1)



Model	E	FB	MF	R	TF	UF	W	ZF	Mounting b	Mounting G
ZPRM/8032	50	7	10	32	64	80	16	130	ZQM/8032/22	ZQM/8032/30
ZPRM/8040	55	9	10	36	72	90	20	145	ZQM/8040/22	ZQM/8040/30
ZPRM/8050	65	9	12	45	90	110	25	155	ZQM/8050/22	ZQM/8050/30
ZPRM/8063	75	9	12	50	100	125	25	170	ZQM/8063/22	ZQM/8063/30
ZPRM/8080	100	12	16	63	126	154	30	190	ZQM/8080/22	ZQM/8080/30
ZPRM/8100	120	14	16	75	150	186	35	205	ZQM/8100/22	ZQM/8100/30

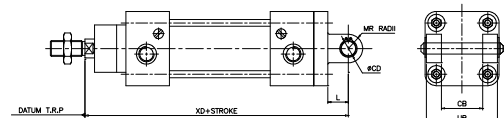
Side Mounting Style “C”(MS1)

Model	AB	AH	AO	SA	TR	XA	Mounting C
ZPRM/8032	7	32	11	142	32	144	ZQM/8032/21
ZPRM/8040	10	36	12	161	36	163	ZQM/8040/21
ZPRM/8050	10	45	13	170	45	175	ZQM/8050/21
ZPRM/8063	10	50	13	185	50	190	ZQM/8063/21
ZPRM/8080	12	63	19	210	63	215	ZQM/8080/21
ZPRM/8100	14.5	71	19	220	75	230	ZQM/8100/21



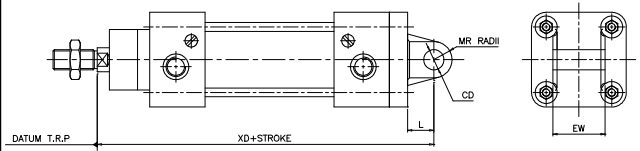
Rear Clevis Mounting Style “D”(MP2)

Model	CB	CD ^{G7}	L	MR	UB	XD	Mounting D
ZPRM/8032	26	10	13	9	45	142	ZQM/8032/23
ZPRM/8040	28	12	15	12	52	160	ZQM/8040/23
ZPRM/8050	32	12	16	12	60	170	ZQM/8050/23
ZPRM/8063	40	16	22	15	70	190	ZQM/8063/23
ZPRM/8080	50	16	21	15	90	210	ZQM/8080/23
ZPRM/8100	60	20	26	20	110	230	ZQM/8100/23



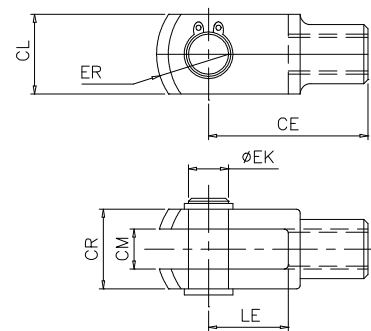
Rear Eye Mounting Style “R”(MP4)

Model	CD ^{G7}	EW	L	MR	XD	Mounting R
ZPRM/8032	10	26	16	9	142	ZQM/8032/27
ZPRM/8040	12	28	17	12	160	ZQM/8040/27
ZPRM/8050	12	32	17	12	170	ZQM/8050/27
ZPRM/8063	16	40	22	15	190	ZQM/8063/27
ZPRM/8080	16	50	22	15	210	ZQM/8080/27
ZPRM/8100	20	60	26	20	230	ZQM/8100/27



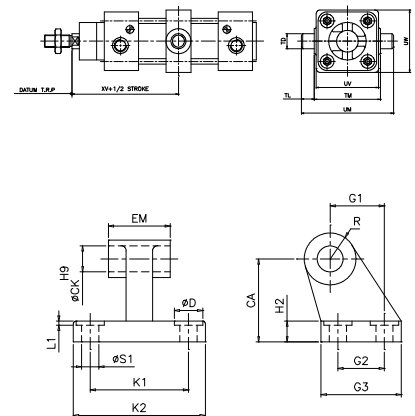
Piston Rod Clevis Mounting Style “F”

Model	CE	EK ^{h11}	CL	CM	CR	ER	LE	Mounting F
ZPRM/8032	40	10	20	10	28	16	20	ZQM/8025/25
ZPRM/8040	48	12	24	12	31	19	24	ZQM/8040/25
ZPRM/8050	64	16	32	16	40	25	32	ZQM/8050/25
ZPRM/8063	64	16	32	16	40	25	32	ZQM/8050/25
ZPRM/8080	80	20	40	20	48.5	32	40	ZQM/8080/25
ZPRM/8100	80	20	40	20	48.5	32	40	ZQM/8080/25



Central Trunnion Mounting Style “H”(MT4)

Model	TD ^{e9}	TL	TM	UM	UW	XV	UV	Mounting H
ZPRM/8032	12	12	50	74	47	73	47	ZQM/8032/28
ZPRM/8040	16	16	63	95	58	82.5	58	ZQM/8040/28
ZPRM/8050	16	16	75	107	70	90	70	ZQM/8050/28
ZPRM/8063	20	20	90	130	80	97.5	80	ZQM/8063/28
ZPRM/8080	20	20	110	150	100	110	100	ZQM/8080/28
ZPRM/8100	25	25	132	182	126	120	126	ZQM/8100/28

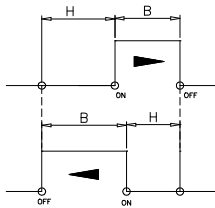
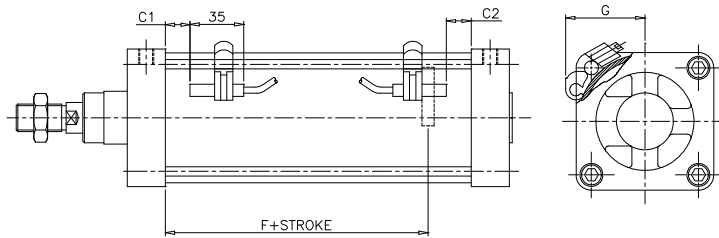


Mounting – Wide Hinge (SW)

Model	CA	CK ^{H9}	D	EM	G1	G2	G3	H2	K1	K2	L1	R	S
ZPRM/8032	32	10	11	26	21	18	31	8	38	51	1.6	10	6.6
ZPRM/8040	36	12	11	28	24	22	35	10	41	54	1.6	11	6.6
ZPRM/8050	45	12	15	32	33	30	45	12	50	65	1.6	13	9
ZPRM/8063	50	16	15	40	37	35	50	12	52	67	1.6	15	9
ZPRM/8080	63	16	18	50	47	40	60	14	66	86	2.5	15	11
ZPRM/8100	71	20	18	60	55	50	70	15	76	96	2.5	19	11

Magnetic ISO/VDMA Cylinders ZPRM/8000/M

Magnetic Piston Operation Fitted with Switches



Schematic representation of switching.
Arrow indicate's direction of piston travel.

Model	B	C1	C2	F+St	G	H
ZPRM/8032/M	8	(1)	(3)	22	29	2
ZPRM/8040 /M	11	(1.5)	(1)	21.5	33	2
ZPRM/8050 /M	12	0	(2)	22	38	2
ZPRM/8063 /M	14	5	5	27.5	44	2
ZPRM/8080 /M	15	7.5	7.5	31.5	51	3
ZPRM/8100 /M	20	9	9	32	59	3

Dimensions 'C1' and 'C2' are minimum required for full stroke of cylinder when cable is facing inwards and are increased by the appropriate amount of obtain intermediate switch positions. Dimensions shown () represent the distance for full stroke at which an 'ON' signal is obtained with the switch resting against the end cover.

Dimension 'H' is the length during which switch contact is maintained in the 'ON' condition when the piston direction is reversed. This is normally termed 'Hysteresis'. Dimension 'B' is the distant from the point at which the switch makes contact, i.e. 'ON' to the point of breaking contact, i.e. 'OFF'.