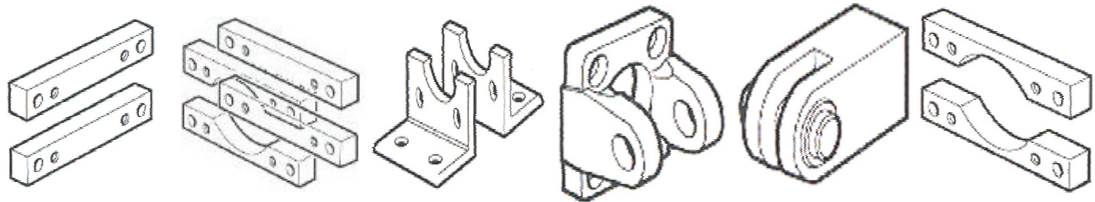


Standard Cylinder Double acting(Metric) ZRM/900 Ø 32-150 mm

Standard Models :

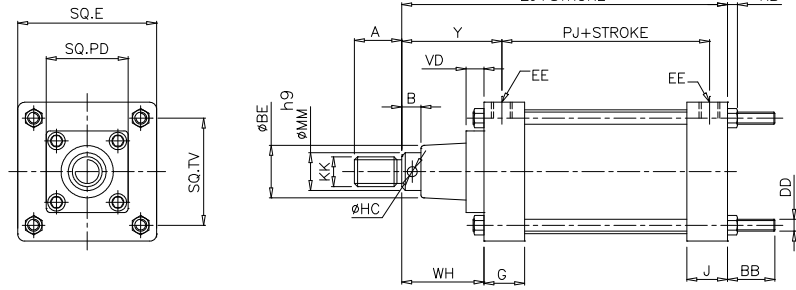
Ø mm	Piston Rod(mm)	Port Size	Standard	Service Kit
32	12.7	G1/8	ZRM/9125	ZRQM/9125/00
50	19.05	G1/4	ZRM/920	ZRQM/920/00
63	25.4	G3/8	ZRM/925	ZRQM/925/00
100	31.75	G3/8	ZRM/940	ZRQM/940/00
125	38.1	G1/2	ZRM/950	ZRQM/950/00
150	38.1	G1/2	ZRM/960	ZRQM/960/00

Ø (mm)	B	BG	C	D	F	G
--------	---	----	---	---	---	---



32	ZM/P6938/2	ZQM/819	ZQM/754	ZM/P6937/2	ZQM/402	ZM/P6938/1
50	ZQM/875	ZQM/1182	ZQM752	ZM/P10228	ZQM/405	ZQM/871
63	ZQM876	ZQM/1184	ZQM748	ZM/P10311	ZQM/407	ZQM/877
100	ZQM887	ZQM/1187	ZQM/982	ZQM/758/2	ZQM/408	ZQM/987
125	ZQM886	ZQM/1188	ZQM/981	ZQM/759/2	ZQM/409	ZQM/988
150	ZQM/884/2	ZQM/1189	ZQM/826	ZQM761/2	ZQM/409	ZQM/884/1

Standard Cylinders Double acting ZRM/900, Ø 32-150



Basic Dimensions

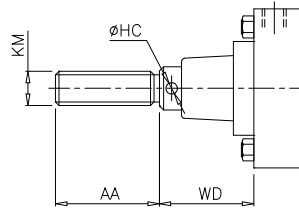
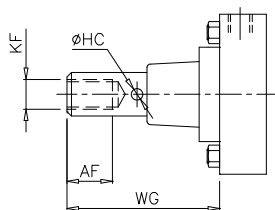
Ø(mm)	A	B	E	G	J	Y	BB	Ø BE	DD	EE	HC
32	14.5	9.5	44.5	25.4	22	49.5	21	24	M6	G 1/8	5
50	24	16	63.5	29.5	24	60.5	25.5	35	M8	G 1/4	6.5
63	33.5	19	75	30	25.5	68	25.5	41	M8	G 3/8	8
100	38	19	114	35	35	77	32	43	M10	G 3/8	8
125	47.5	19	140	41.5	41.5	101	48	59	M12	G 1/2	10
150	47.5	19	167	41.5	41.5	101	49.5	59	M16	G 1/2	10

Ø (mm)	KB	KK	MM	PD	PJ+	TV	VD	WH	ZJ+
32	5	M10	½"	-	67	30.5	-	36.5	125.5
50	6.5	M16	¾"	-	67	47.5	-	45.5	137
63	6.5	M22	1"	-	73	55.5	-	52.5	152.5
100	8	M24	1 ¼"	64	97	89	12.7	63.5	187.5
125	10	M30	1 ½"	83	109	108	17.5	82.5	228.5
150	13.5	M30	1 ½"	83	115.5	128.5	17.5	82.5	235

Cylinder Variants

ZRM/900/X – Cylinders with Female piston rod thread

ZRM/900/Y – Cylinders with Full piston rod thread (Male)



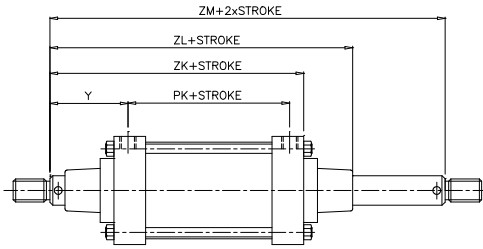
Ø (mm)	AF	Ø HC	KF	WG
32	14	5	M10	50
50	19	6.5	M12	64.5
63	28.5	8	M18	84.5
100	38	8	M24	104.5
125	48	10	M30	133.5
150	48	10	M30	133.5

Ø (mm)	AA	Ø HC	KM	WD
32	31	5	M12	36.5
50	48	6.5	M18	42
63	63.5	8	M24	49.5
100	79	8	M30	60.5
125	95	10	M36	79.5
150	95	10	M36	79.5

Standard Cylinders

Double acting ZRM/900, Ø 32-150 Cylinder Variants

ZRM/900/J – Cylinders with Double ended piston rod



Ø (mm)	PK	Y	ZK	ZL	ZM
32	68	49	129	156	165
50	67	60.5	142	171.5	187.5
63	73	68.5	157	190.5	210
100	96	77.5	187	231.5	251
125	110	100.5	229	292.5	311.5
150	116	100.5	235	298.5	318

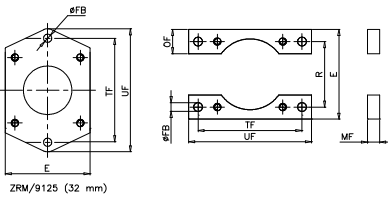
Mountings

Standard cylinder mountings for ZRM/900

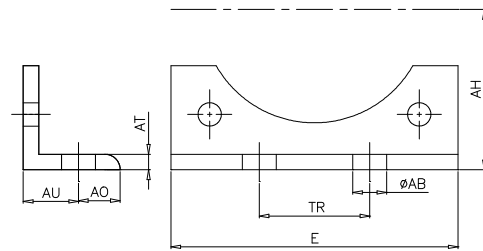
Rear flange – B

Front flange – G

Front and rear flange - BG



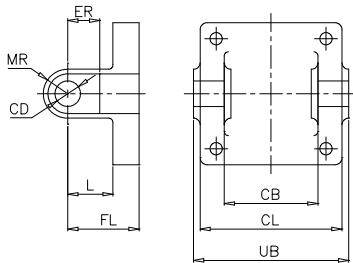
Foot - C



Ø (mm)	E	FB	MF	OF	R	TF	UF	Kg
32	45	8.3	9.5	-	30.2	63.5	79	0.15
50	63.5	8.7	12.7	16	47.5	85.7	105	0.20
63	75	8.7	12.7	19	55.5	93.7	113	0.25
100	114	13.5	16	32	89	146	178	1.00
125	140	13.5	20	40	108	171.5	203	1.50
150	167	16.7	20	40	128.5	205	243	2.40

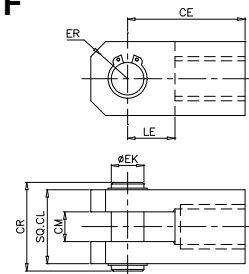
Ø (mm)	AB	AH	AO	AT	AU	E	TR	Kg
32	6.7	24	7	3	12	73	-	0.06
50	13	40	11	5	19	63	-	0.20
63	13	46.5	11	5	19	76	-	0.25
100	14	70	24.5	8	25.5	114	51	0.5
125	17	82.5	21.5	8	28.5	140	57.2	1.00
150	17	99.5	25	10	35	167	70	2.50

Rear Clevis - D



Ø (mm)	CB	CD ⁹⁷	CL	ER	FL	L	MR	UB	Kg
32	25.4	6	44.5	-	14.5	9.5	6.5	-	0.08
50	34.9	16	63	-	28.5	20.5	13	-	0.25
63	42.9	16	74	-	28.5	20.5	13	-	0.25
100	70	22	114	-	57	36.5	19	117.5	1.25
125	92	25	140	32	70	43	24	143	2.50
150	106.5	32	167	35	76	49	28.5	170	3.50

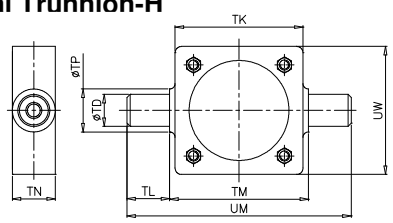
Rear Clevis - F



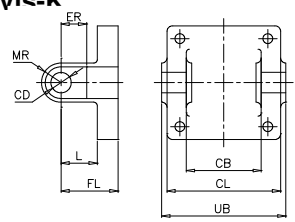
Ø (mm)	CE	CL	CM	CR	EK ⁹¹⁰	ER	LE	Kg
32	25.5	16	6.4	21	6	6.5	11	0.03
50	41.5	25.5	11	33	12	13	19	0.10
63	58.7	38	14	47	16	19	25.5	0.40
100	66.7	44.5	16	53	18	22	28.5	0.90
125	79.5	51	20	60	22	25	32	1.25
150	79.5	51	20	60	22	25	32	1.25

Standard Cylinders Double Acting ZRM/900, Ø32-150

Central Trunnion-H



Front Clevis-K

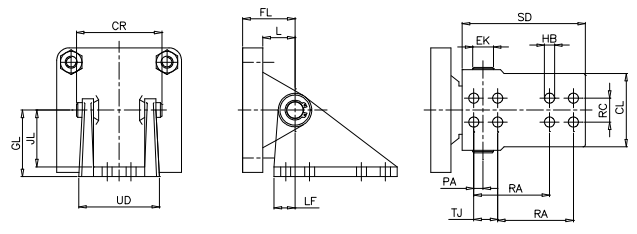


Ø (mm)	TD ^{G10}	TK	TL	TM	TN	TP	UM	UW	Kg
32	12	45	17.5	50.8	20.5	18	85.5	45	0.16
50	18	70	25.5	79.5	32	29	130	70	0.60
63	22	81	32	90.5	38	35	154	81	0.90
100	32	127	41.5	139.5	44.5	44.5	222.5	127	2.50
125	38	152	51	165	51	51	266.5	152	3.50
150	38	187	51	192	51	51	293.5	187	5.00

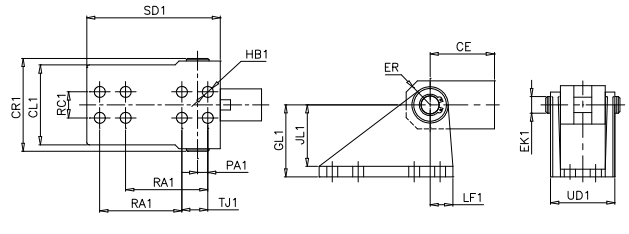
Ø (mm)	CB	CD ^{G7}	CL	ER	FL	L	MR	UB	Kg
32	25.4	6	44.5	-	14.5	9.5	6.5	-	0.08
50	34.9	16	63	-	28.5	20.5	13	-	0.25
63	42.9	16	74	-	28.5	20.5	13	-	0.25
100	70	22	114	-	57	36.5	19	117.5	1.25
125	92	25	140	32	70	43	24	143	2.50
150	106.5	32	167	35	76	49	28.5	170	3.50

Note : These mountings are only supplied assembled complete with the cylinder. Unless otherwise specified

Rear Hinge-L



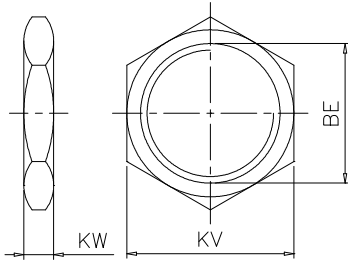
Front Hinge-M



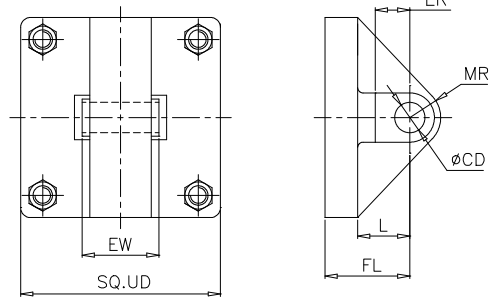
Ø (mm)	CE	CL	CL1	CR	CR1	FL	GL	EKg10	EK1g10	GL'	HB	HB1	JL	JL1	L	LF	ER
32	25.5	34.5	34.5	39.5	39.5	25.5	28.5	6	6	28.5	7.2	7.2	20.5	20.5	19	9.5	6.5
50	41.5	43	43	73	54	35	32	12	12	32	8.5	8.5	24	24	25.5	14.5	13
63	58.7	60	60	73	73	35	47.5	16	16	47.5	8.5	8.5	39.5	39.5	25.5	16	19
100	66.7	70	70	82.5	82.5	51	74.5	18	18	74.5	12	12	65	65	30.5	24	22
125	79.5	70	79.5	82.5	92	57	74.5	18	22	89	12	10.3	65	79.5	33.5	24	25
150	79.5	98.5	79.5	114.5	92	70	89	25	22	89	13.5	13.5	76	79.5	43	28.5	25

Ø (mm)	LF1	PA	PA1	RA	RA1	RC	RC1	SD	SD1	TJ	TJ1	UD	UD1	Kg-L	Kg-m
32	9.5	1.5	1.5	25.5	25.5	-	-	41.5	41.5	-	-	-	-	0.25	0.17
50	14.5	5	5	32	32	-	-	51	51	-	-	49	49	1.20	0.40
63	16	6.5	6.5	47.5	47.5	19	19	66.5	66.5	-	-	68.5	68.5	1.25	1.00
100	24	11	11	76	76	22	22	101.5	101.5	-	-	82.5	82.5	3.50	2.00
125	28.5	11	16	76	89	22	22	101.5	114.5	-	-	82.5	-	5.00	3.00
150	28.5	12.5	16	101.5	89	32	22	165	114.5	32	-	108	-	11.0	3.00

Nose - N



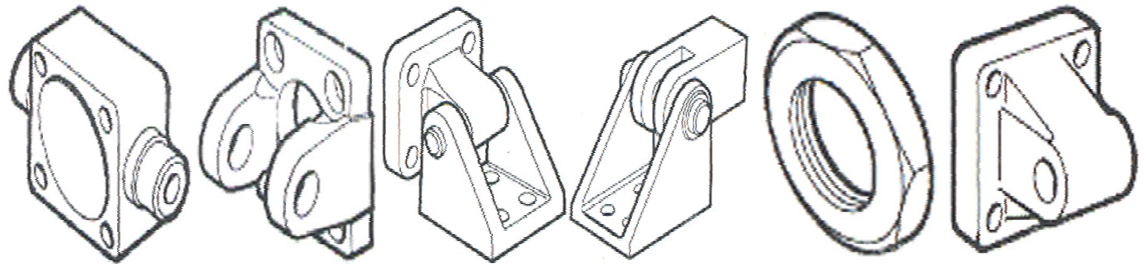
Rear Eye - R



Ø (mm)	BE	KV(A/F)	KW	Kg
32	M22x2	28	6	-
50	M33x2	42	8	-
63	M39x2	47	8	-
100	M45x2	56	8	-
125	M56x2	70	13	-
150	M56x2	70	13	-

Ø(mm)	CD ^{H7}	ER	EW	FL	L	MR	UD	Kg
32	6	-	19	25.5	19	9	45	-
50	16	19	38	35	25.5	14	63.5	-
63	16	19	38	35	25.5	14	75	-
100	18	25.5	44.5	51	30.5	21	114	-
125	18	28.5	44.5	57	33	21	140	-
150	25	28.5	63.5	70	43	25.5	167	-

∅ (mm)	H	K	L	M	N	R
--------	---	---	---	---	---	---



32	ZM/P14001	ZM/P6937/1	ZQM/394	ZQM/393	ZM/P11716	ZM/P11966
50	ZM/P8635	ZQM/962	ZQM/909	ZQM/908	ZM/9969	ZM/P10349
63	ZM/P8636	ZQM/964	ZQM/910	ZQM/901	ZM/9905	ZM/P10351
100	ZM/P8638	ZQM/758/1	ZQM/912	ZQM/902	ZQM/1475	ZQM/763
125	ZM/P8639	ZQM/759/1	ZQM/913	ZQM/903	ZQM/997	ZQM/764
150	ZM/P8640	ZQM/761/1	ZQM/914	ZQM/903	ZQM/997	ZQM/765