

- > Port size: 1/4" or 3/8" (ISO G/NPT)
- > Assists machine designers in complying with the European Machineries Directive
- > Excelon design allows in-line installation or modular installation with other Excelon products
- > Can help existing machinery to comply with PUWER (Provision and Use of Work Equipment Regulations)
- > Controlled increase of downstream pressure onstart up
- > High forward flow capacity
- > High flow dump facility



Technical features

Medium:

Compressed air only

Operating pressure:

17 bar (250 psi) pilot actuated
 10 bar (145 psi) solenoid actuated

Minimum operating pressure:

3 bar (44 psi)

Snap pressure:

Full flow when downstream pressure reaches 50 – 80% of inlet pressure

Port size:

G1/4, G3/8, 1/4" or 3/8" PTF

Air pilot port:

M5 with ISO G main ports
 10-32 UNF with PTF main ports

Exhaust port:

R1/4" with ISO G main ports

Charge time:

For 2 litre downstream volume and 6,3 bar (90 psi) inlet pressure
 0,8 sec. minimum
 99 sec. maximum

Flow:

21 dm³/s at port size: G1/4
 Operating pressure: 6,3 bar (91 psi)
 Δp : 0,5 bar (7 psi)
 P1 to P2 = Cv 1,59
 P2 to P3 = Cv 1,72

Ambient/Media temperature:

Solenoid actuated:
 -20° ... +50°C (-4° ... +122°F)
 Pilot actuated:
 -20° ... +65°C (-4° ... +149°F)
 Air supply must be dry enough to avoid ice formation at temperatures below +2°C (+35°F).

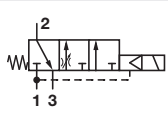
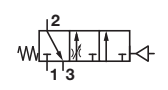
Materials:

Body: Zinc alloy
 Elastomers: Synthetic materials
 Internal components: Brass/steel

Electrical details for solenoid operators


Voltage tolerance	± 10%
Rating	100% continuous duty
Inlet orifice	1,0 mm
Electrical connection	Industrial Standard, 22 mm
Solenoid coil mounting	Four positions x 90°
Protection class	IP 65 (with sealed plug)

Technical data - standard models

Symbol	Port size	Size	Actuation/return	Voltage	Pilot port	Weight (kg)	Typ
	G1/4	Basic	Solenoid/spring	24 V d.c.	-	0,91	P72F-2GC-PFN *1)
	G3/8		Solenoid/spring	24 V d.c.	-	0,90	P72F-3GC-PFN*1)
	G1/4	Basic	Air/spring	–	M5	0,88	P72F-2GA-NNN
	G3/8		Air/spring	–	M5	0,87	P72F-2GA-NNN

*1) To select other solenoid type and coil voltage refer to option selector on page 2

Voltage codes and spare coils

22 mm coil for connector interface acc. to industrial standard				
	Voltage	Power Inrush/Hold	Model	Code
	12 V d.c.	2 W	QM/48/12J/21	12J
	24 V d.c.	2 W	QM/48/13J/21	13J
	110/120 V 50/60 Hz	4/2,5 VA	QM/48/18J/21	18J
	220/240 V 50/60 Hz	6/5,0 VA	QM/48/19J/21	19J

Connector plugs



Option selector

P72F-★-★-★-★-★-★

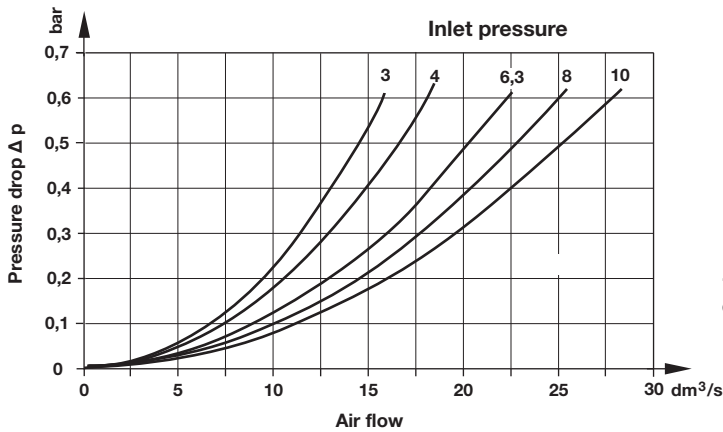
Port size	Substitute
1/4"	2
3/8"	3
Thread size	Substitute
ISO G (standard)	G
PTF	A
Operator	Substitute
Air pilot *1)	A
22 mm miniature solenoid	C
CNOMO	L

Connector plugs	Substitute
With	A
Without	N
Coil voltage	Substitute
24 V d.c.	F
12 V d.c.	E
220/240 V a.c.	B
110/120 V a.c.	A
No coil	Z
No solenoid	N
Solenoid operator	Substitute
With	P
No solenoid	N

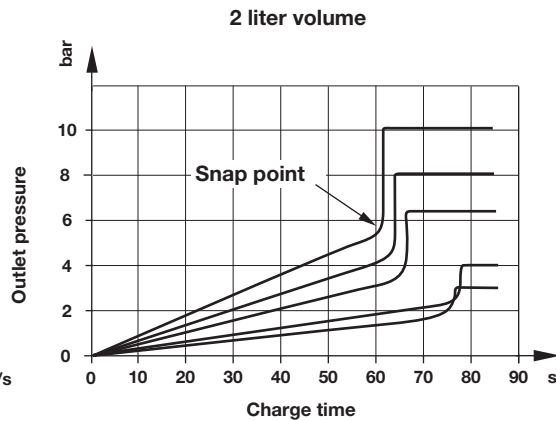
*1) To order air pilot models also substitute 'NNN' at digits 8, 9 and 10 e.g. P72F-2GA-NNN.

Flow characteristics

Port size: G1/4



Charge time



Accessories

Wall mounting bracket	Quikclamp®	Quikclamp with wall bracket®	Quikmount pipe adaptor *1)	Porting block with three alternative G1/4 ports	2/2 Shut-off valves (for full technical specification see datasheet 8.160.600)	3/2 Shut-off valves (for full technical specification see datasheet 8.160.600)
Page 3	Page 3	Page 3	Page 3	Page 3	Page 3	Page 3
4224-50	4214-51	4214-52	G1/4: 4215-08 G3/8: 4215-09 1/4 PTF: 4215-02 3/8 PTF: 4215-03	G1/4: 4216-52 1/4 PTF: 4216-50	G1/4: T72B-2GA-P1N G3/8: T72B-3GA-P1N 1/4 PTF: T72B-2AA-P1N 3/8 PTF: T72B-3AA-P1N	G1/4: T72T-2GA-P1N G3/8: T72T-3GA-P1N 1/4 PTF: T72T-2AA-P1N 3/8 PTF: T72T-3AA-P1N

Pressure switch

Porting block for pressure switch	Pressure switch (0,5 ... 8 bar)	Padlock (brass) with two keys *1)
0523109000000000	0881300000000000	0613633000000000

*1) for shut-off valves

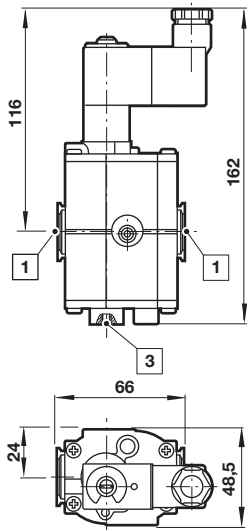
Padlock

Silencer
Page 3
R1/4: MB002B 1/4 PTF: MB002A

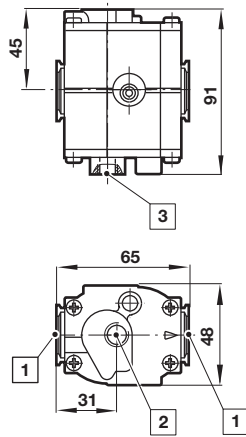
Dimensions in mm
Projection/First angle

Drawings

Solenoid actuated

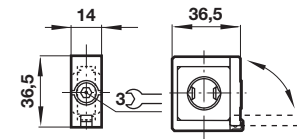


Air pilot actuated

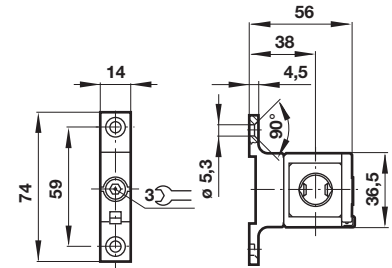


- 1 Main ports 1/4" or 3/8"
- 2 Pilot port
- 3 Exhaust port

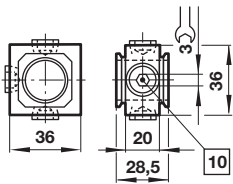
Accessories
Quikclamp®



Quikclamp® with wall bracket

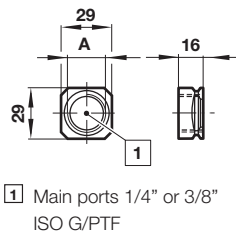


Porting block



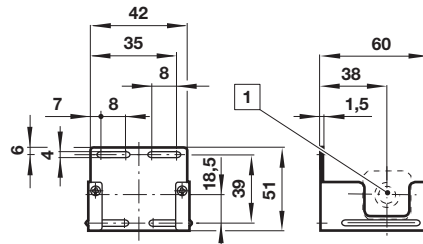
10 Ports (G1/4 or 1/4 NPT) plugged

Pipe adapter



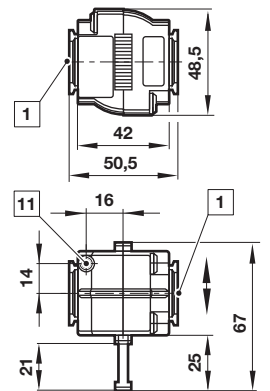
1 Main ports 1/4" or 3/8" ISO G/PTF

Wall mounting bracket



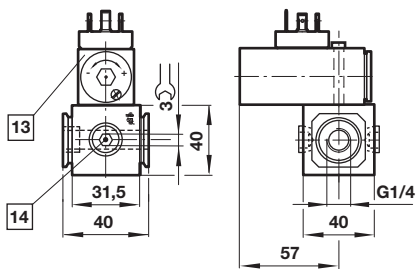
1 Main ports

Shut-off valves



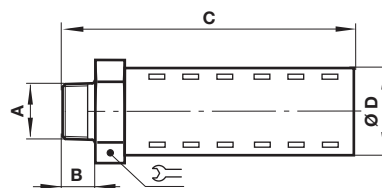
- 1 Main ports 1/4" or 3/8" ISO G/PTF
- 11 Exhaust port M5 at 3/2 valve only

Porting block for pressure switch



- 13 Pressure switch is not in scope of delivery
- 14 Alternative G1/4 ports plugged

Silencer



A	B	C	D	Symbol	Model
R1/4	17	92	32	32	MB002B
1/4 NPT	17	92	32	32	MB002A

Warning

These products are intended for use in industrial compressed air systems only. Do not use these products where pressures and temperatures can exceed those listed under »**Technical features/data**«.

Before using these products with fluids other than those specified, for non-industrial applications, life-support systems or other applications not within published specifications, consult IMI Precision Engineering, Norgren GmbH.

Through misuse, age, or malfunction, components used in fluid power systems can fail in various modes.

The system designer is warned to consider the failure modes of all component parts used in fluid power systems and to provide adequate safeguards to prevent personal injury or damage to equipment in the event of such failure.

System designers must provide a warning to end users in the system instructional manual if protection against a failure mode cannot be adequately provided.

System designers and end users are cautioned to review specific warnings found in instruction sheets packed and shipped with these products.