

Air Line Equipment

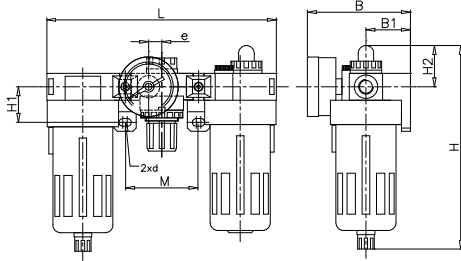
Ordering Examples :

- ✦ Model Number consists of appropriate Product code, Size of Port, Model and Drain Cock.
- ✦ Ordering Example for F+R+L Combination, 1/8" size, Mini type with Manual drain unit is given below.

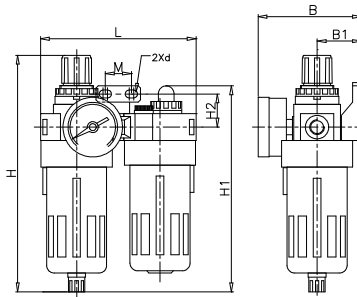
CFRL	18	AC	M
Product Code	Size of Port	Model	Drain Cock

CFRL	18:1/8"	AC:MINI (18, 28)	M : MANUAL
FRL	28 : 1/4"	BC: MIDI (28, 38)	A : AUTO
FR	38 : 3/8"	CC: BIG (48,68)	S : SEMI AUTO
F	48 : 1/2"		
R	68 : 3/4"		
L			

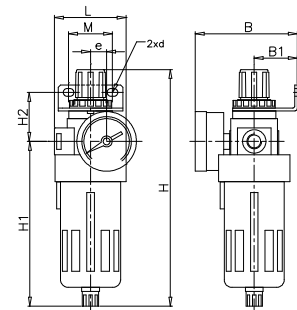
CFRL F+R+L COMBINATION



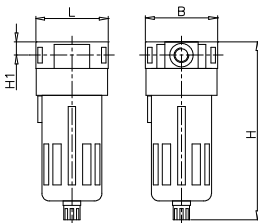
FRL FR+L COMBINATION



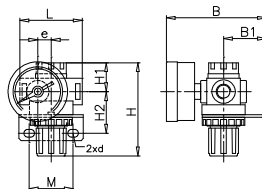
FR PIGGY BACK UNIT



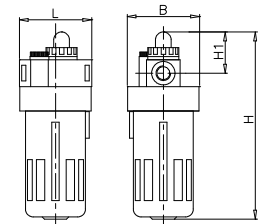
F FILTER

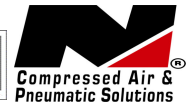


R REGULATOR



L LUBRICATOR





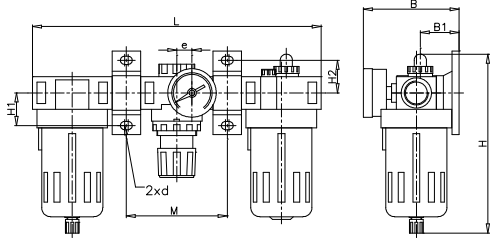
DIMENSIONAL DATA - MINI : MIDI

Product	Series	Model No.	Pr. Port BSPT	Gauge Port BSPT	L	B	H	B1	H1	H2	M	d dia	e
Combination Unit F+R+L	MINI	CFRL - 18AC	1/8"	1/8"	135	85	125	32	31	37	47	7	4
		CFRL - 28AC	1/4"										
	MIDI	CFRL- 28BC	1/4"	1/4"	207	100	172	40	31	38	66	7	12
		CFRL - 38AC	3/8"										
Combination Unit : FR + L	MINI	FRL - 18AC	1/8"	1/8"	88	85	150	32	125	31	12	7	4
		FRL - 28AC	1/4"										
	MIDI	FRL - 28BC	1/4"	1/4"	140	103	206	40	183	31	20	7	16
		FRL - 38BC	3/8"										
Filter Regulator Unit : FR	MINI	FR - 18AC	1/8"	1/8"	40	87	150	34	88	41	34	7	4
		FR - 28BC	1/4"										
	MIDI	FR - 28 BC	1/4"	1/4"	65	103	206	40	146	41	37	7	16
		FR - 38 BC	3/8"										
Filter Unit : F	MINI	F - 18 AC	1/8"	-	40	41	98	-	10	-	-	-	-
		F - 28AC	1/4"										
	MIDI	F - 28BC	1/4"	---	65	65	158	-	13	-	-	-	-
		F - 38BC	3/8"										
Regulator Unit : R	MINI	R- 18 AC	1/8"	1/8"	40	85	73	32	17	38	34	7	4
		R - 28 AC	1/4"										
	MIDI	R - 28BC	1/4"	1/4"	56	100	88	40	25	38	37	7	12
		R - 38BC	3/8"										
Lubrication Unit : L	MINI	L - 18 AC	1/8"	---	40	41	121	-	37	-	-	-	-
		L - 28 AC	1/4"										
	MIDI	L - 28 BC	1/4"	---	65	65	167	-	38	-	-	-	-
		L - 38 BC	3/8"										

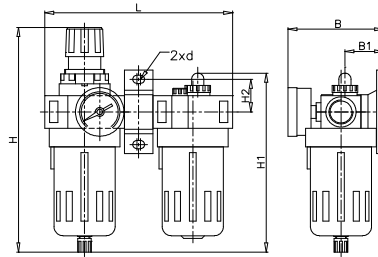
Flow Characteristics :

Model No.	Flow Rate L/min	
CFRL – 18 – AC FRL – 18 – AC	800	<ul style="list-style-type: none"> • Primary Pressure : 9 bar • Secondary Pressure : 7 bar (Static) • P = 1 bar Filtration – 40u <ul style="list-style-type: none"> • Gauge Pressure
CFRL – 28 - AC FRL – 28 – AC	1100	
CFRL – 28 – BC FRL – 28 – BC	1400	
CFRL – 38 – BC FRL – 38 - BC	1700	

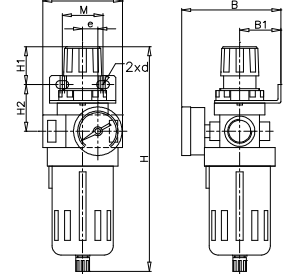
CFRL F+R+L COMBINATION



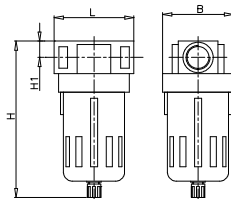
FRL FR+L COMBINATION



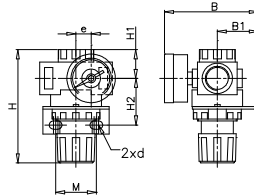
FR PIGGY BACK UNIT



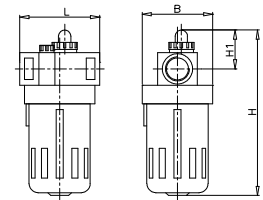
F FILTER



R REGULATOR



L LUBRICATOR



DIMENSIONAL DATA - BIG													
Product	Series	Model No.	Pr. Port BSPT	Gauge Port BSPT	L	B	H	B1	H1	H2	M	d	e
Combination Unit F+R+L	BIG	CFRL- 48CC	1/2"	1/4"	280	113	195	45	72	44	92	9X13	17
		CFRL- 68CC	3/4"										
Combination Unit : FR + L	BIG	FRL - 48CC	1/2"	1/4"	188	113	244	45	195	36	72	9X13	17
		FRL -68CC	3/4"										
Filter Regulator Unit : FR	BIG	FR - 48CC	1/2"	1/4"	88	120	243	48	150	52	45	8X13	17
		FR -68CC	3/4"										
Filter Unit : F	BIG	F - 48 CC	1/2"	-	88	79	170	-	18	-	-	-	-
		F - 68CC	3/4"										
Regulator Unit : R	BIG	R- 48 CC	1/2"	1/4"	80	113	126	46	32	52	45	-X13	17
		R - 68 CC	3/4"										
Lubrication Unit : L	BIG	L - 48 CC	1/2"	---	88	79	117	-	44	-	-	-	-
		L - 68 CC	3/4"										

Flow Characteristics :

Model No.	Flow Rate L/min	<ul style="list-style-type: none"> • Primary Pressure : 9 bar • Secondary Pressure : 7 bar (Static) • P = 1 bar Filtration - 5μ • Gauge Pressure
CFRL - 48 - CC FRL - 48 - CC	3000	
CFRL - 68 - CC FRL - 68 - CC	3100	