

## 2/2 Valves ZS/534

Type	Description
ZS/534/1	Button operated, spring return
ZS/534/8	Roller actuated, spring return
ZS/534/40	Pressure actuated, spring return

Only 1/8" spindle movement is required to fully open these valves. They can be supplied with the operating mechanisms listed or without mechanisms for incorporation into machines. The valves are normally held closed by a return spring.

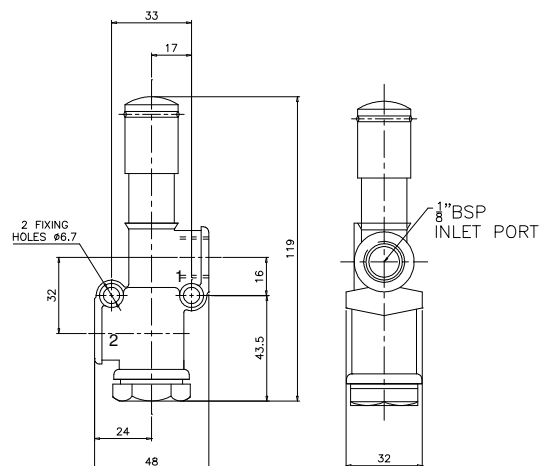
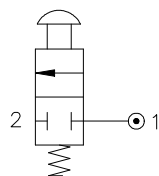
Depression of the plunger moves the seal off the seat to allow the air to pass through the valve. When released the spring returns the piston to seal the valve.

### ZS/534/1

Button operated, spring return

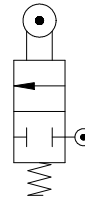
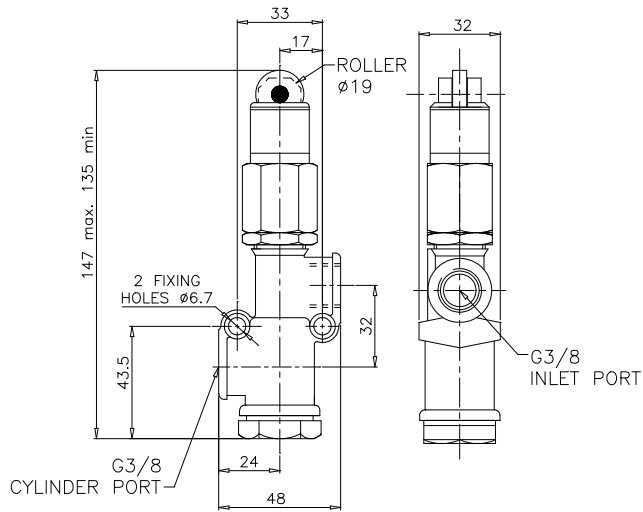
**Manual operating force :**

110N + 16N per bar supply pressure



### ZS/534/8

Roller actuated, Spring return  
 Mechanical operating force :  
 110N + 16N per bar supply pressure  
 Operating pressure : 0 - 7 bar



### ZS/534/40

Pressure actuated, Spring return  
 Air pilot pressure : 2,8 + 0.45 x supply bar

