

## **5/2 and 5/3 Piston valves ZNCN/562, ZNCN/564**

### **ZNCN/562 Supply sealed mid-position**

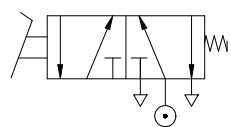
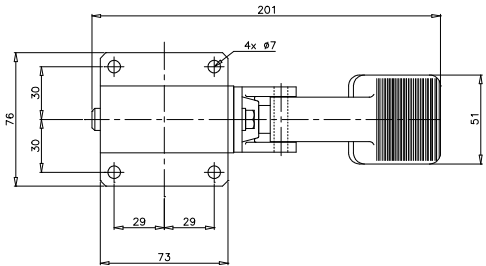
When the piston is in this position, the supply air is taken to the inlet port 'A' and connected to the cylinder port 'B'. The exhausting air passes from cylinder port 'D' to exhaust port 'E'.

In the mid-position, the inlet port 'A' is sealed and isolated from the others. Cylinders ports 'B' and 'D' are connected to exhaust.

In the mid-position all the ports are sealed and isolated from one another.

### **ZNCN/564 Fully sealed mid-position**

When the valve is operated, the piston moves to the other end of the valve, the supply air is connected to port 'D' and the exhausting air passes from port 'B' to port 'C'.

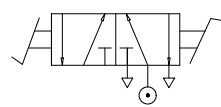
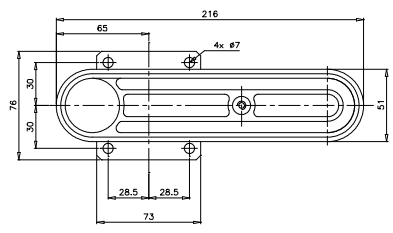
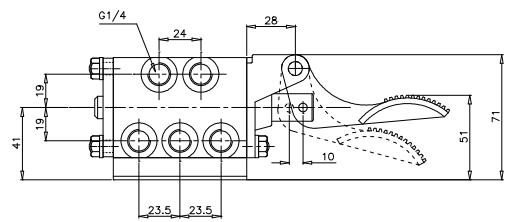


**ZNCN/564/9**

Pedal operated, spring return

**Manual operating force : 45N approx**

To avoid accidental operation, this valve should be installed in a protected position. Alternatively a cover guard should be fitted.

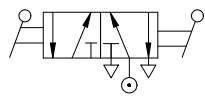
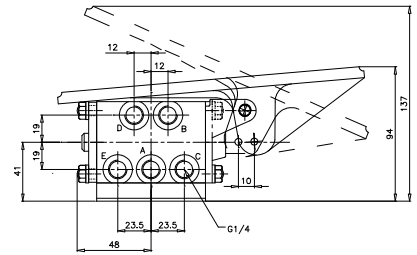


**ZNCN/564/10**

Treadle Set-Reset

**Manual operating force : 20N approx**

To avoid accidental operation, this valve should be installed in a protected position.



**ZNCN/564/7/2/PN**  
**1/4" BSP 5/2 Hand Lever Set-Reset Valve**

**Manual Operating Force : 2000(Approx)**

**Operating Temperature : +50°C to 80°C**

