

Standard manual override with detend
Compact design
Common exhaust line

Technical features
Betriebsmedium:

 Compressed air, filtered
lubricated or non lubricated

Operation:

 Elektromagnetisch, indirekt
gesteuert

Operating pressure:

max. 10 bar

Nominal size:

4 and 7 mm

Port size:

G 1/8, G 1/4

Mounting position:

 Any, but preferably with
solenoid vertical

Flow direction:

Fixed

Fluid/Ambient temperature:

-10°C ... +60 °C

Betätigungsmagnete:

siehe Magnettabelle

Air supply must be dry enough

to avoid ice formation at

temperatures below +2°C

If installed in the open protect

all connections against the

penetration of moisture!

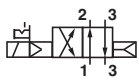
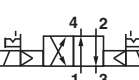
Material:

Housing: Aluminium

Pilot flange : plastic (PBT)




Seals: NBR

Technical data

Symbol	Port size	Nominal size	Actuation/return	Operating pressure (bar)		Flow (l/min)	Switching time (ms)		Manual override	Current draw (W)	Weight (kg)	Dimension No.	Model *
				Min.	Max.		On	Off					
	G 1/8	4	Solenoid/air spring	1,5	10	700	20	20	Standard	< 5	0,30	1	2622000
	G 1/8	4	Solenoid/air spring	2	8	700	19	62	Standard	< 2	0,30	1	2622001
	G 1/4	7	Solenoid/air spring	1,5	10	1400	24	27	Standard	< 5	0,39	1	2622200
	G 1/4	7	Solenoid/air spring	2	8	1400	23	75	Standard	< 2	0,39	1	2622201
	G 1/8	4	Solenoid/Solenoid	1,5	10	700	11	12	Standard	< 5	0,40	2	2622100
	G 1/8	4	Solenoid/Solenoid	2	8	700	13	14	Standard	< 2	0,40	2	2622101
	G 1/4	7	Solenoid/Solenoid	1,5	10	1400	24	27	Standard	< 5	0,62	2	2622300
	G 1/4	7	Solenoid/Solenoid	2	8	1400	24	27	Standard	< 2	0,62	2	2622301

*When ordering please indicate solenoid, voltage and current type (frequency).

Solenoid actuators

	Power consumption		Rated current		Ex-Protection	IP-Protection class (to EN 60529)	Temperature Ambient/Fluid (°C)	Electrical connection	Weight (kg)	Dimension Nr.	Circuit diagram Nr.	Model
	24 V d.c. (W)	230 V a.c. (VA)	24 V d.c. (m A)	230 V a.c. (m A)								
	4,8	8,5	200	—	—	IP 65 (with connector)	-15 ... +50	Connector DIN EN 175301-803 Form B *6)	0,1	11	1	3052
	1,8	—	70	—	—	IP 65 (with connector)	-15 ... +50	Connector DIN EN 175301-803 Form B *6)	0,1	11	1	3050
	4,4	8,0	190	—	—	IP 65 (with connector)	-15 ... +50	Connector DIN EN 175301-803 Form A *6)	0,1	12	1	3030
	1,6	3,5	30	—	—	IP 65 (with connector)	-15 ... +50	Connector DIN EN 175301-803 Form A *6)	0,1	12	1	3036
	5,0	—	210	—	II2G II2D	Ex mb IIC T4 Gb Ex mb tb IIIC T130 °C Db IP 65 (with connector)	-20 ... +50	3 m cable	0,3	13	14	3060
	—	5,0	—	22	II2G II2D	Ex mb IIC T4 Gb Ex mb tb IIIC T130 °C Db IP 65 (with connector)	-20 ... +50	3 m cable	0,3	13	15	3061
	2,7	—	115	—	II2G II2D	Ex mb IIC T5 Gb Ex mb tb IIIC T95 °C Db IP 65 (with connector)	-20 ... +50	3 m cable	0,3	13	14	3062
	—	2,1	—	9	II2G II2D	Ex mb IIC T5 Gb Ex mb tb IIIC T95 °C Db IP 65 (with connector)	-20 ... +50	3 m cable	0,3	13	15	3063

Standard voltages (±10%) 24 V d.c., 230 V a.c. Further versions on request.

Valves and solenoids can only be combined if their electrical ratings correspond with each other (see table »technical data«).



For valve with power consumption < 5 watt please use 4,4 or 4,8 watt solenoids, for Ex 5 watt solenoids.

For valve with power consumption < 2 watt please use 1,6 or 1,8 watt solenoids, for Ex 2,1 or 2,7 watt solenoids

*6) Connector is not scope of delivery, see table »Accessories«

Model	Approvals ATEX	IECEX	FM	Datasheet
306x	PTB 03 ATEX 2015	—	—	N/en 7.1.560
307x	EC-Declaration of Conformity	—	—	N/en 7.1.565

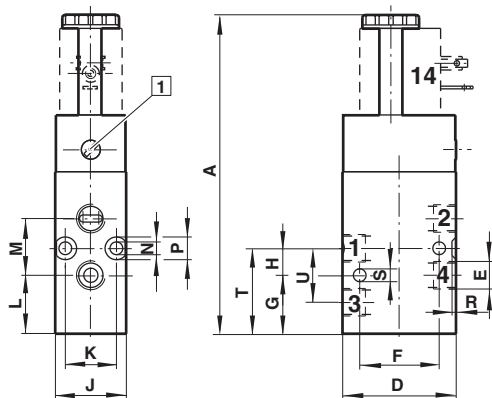
Accessories

Connector DIN EN 175301-803	Silencer *1)
	
	Page 4
0570275 (Form A)	M/S1 (G1/8)
0680003 (Form B)	M/S2 (G1/4)

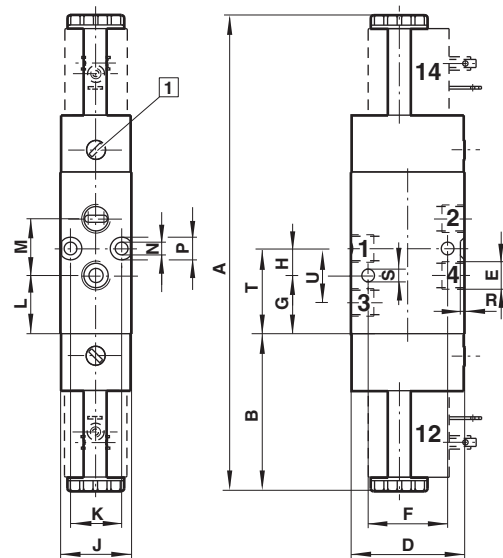
*1) For indoors use only

Dimensions

1



2



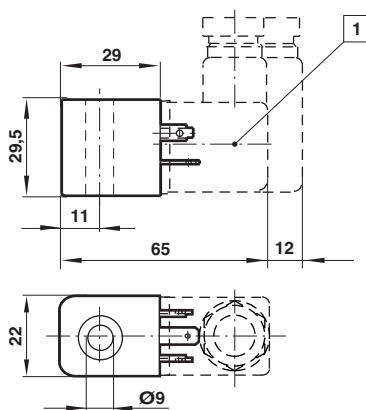
1 Manual override

Nr.	A	B	D	E	F	G	H	J	K	L	M	øN	øP	R	øS	T	U	Model *1)
1	112,5	—	40	G 1/8	28	20,5	9,5	25	18	20,5	20	4,5	8	2	4,5	30	19	26220
1	127,5	—	55	G 1/4	32	28,5	12	30	23	38,5	24	4,5	—	—	5,5	40,5	29	26222
2	172	54	40	G 1/8	28	25	9,5	25	18	25	20	4,5	8	2	4,5	34,5	19	26221
2	191	56,5	55	G 1/4	32	26	12	30	23	36	24	4,5	—	—	5,5	38	29	26223

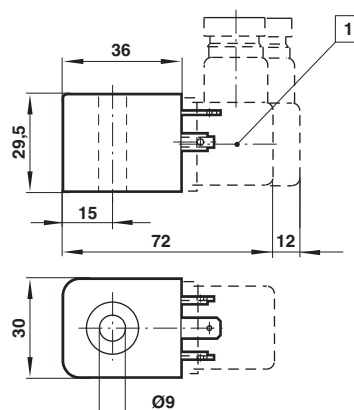
*1) When ordering please indicate solenoid, voltage and current type (frequency).

Solenoids

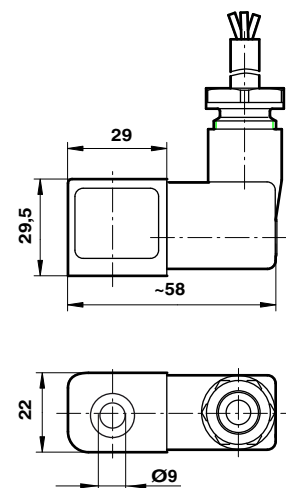
11



12



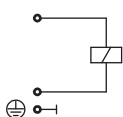
13



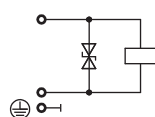
1 Connector can be indexed by 4x90°

Circuit diagrams

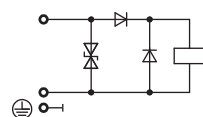
1

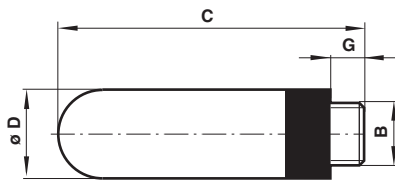


14



15



Silencer
Typ: M/S2, M/S4


B	C	G	Ø D	Weight (g)	Model
G1/8	34	6,5	12,5	1,7	M/S1
G1/4	42,5	8	15,5	3,5	M/S2

Warning

These products are intended for use in industrial compressed air systems only. Do not use these products where values can exceed those listed under »**Technical features/data**«.

Before using these products with fluids other than those specified, for non-industrial applications, life-support systems, or other applications not within published specifications, consult NORGREN.

Through misuse, age, or malfunction, components used in fluid power systems can fail in various modes.

The system designer is warned to consider the failure modes of all component parts used in pneumatic systems and to provide adequate safeguards to prevent personal injury or damage to

equipment in the event of such failure.

System designers must provide a warning to end users in the system instructional manual if protection against a failure mode cannot be adequately provided.

System designers and end users are cautioned to review specific warnings found in instruction sheets packed and shipped with these products.

Functional safety (SIL):

Suitable for certain applications can only be evaluated through examination of each safety-related overall system with regard to the requirements of IEC 61508/61511.